

---

# A Study on the Design and Development of AI Driven Student Performance and Recommendation Dashboard

Ranjeet Kumar Jathaur<sup>1</sup>, Anshita Srivastava<sup>2</sup>, Vipin Dubey<sup>3</sup>, Avdhesh Kasodhan<sup>4</sup>,

Dr. A.P. Srivastava<sup>5\*</sup>

<sup>1,2,3,4</sup> B. Tech Student, <sup>\*5</sup> Assistant Professor & HOD,

Department of Computer Science & Engineering,

NITRA Technical Campus, Ghaziabad, Uttar Pradesh, India-201002

Email: [jathaurranjeet778899@gmail.com](mailto:jathaurranjeet778899@gmail.com), [anshitasrivastava38@gmail.com](mailto:anshitasrivastava38@gmail.com),  
[erdubeyji9007@gmail.com](mailto:erdubeyji9007@gmail.com), [avadheshkasaudhan3@gmail.com](mailto:avadheshkasaudhan3@gmail.com), [apsrivastava@nitra.ac.in](mailto:apsrivastava@nitra.ac.in)

*Published In*

**INTERNATIONAL JOURNAL OF CURRENT RESEARCH AND TECHNIQUES (IJCRT)**

**Volume 16, Issue 2, 2026; DOI: 10.5281/ZENODO.19876547**

**Original Research Article**

*Manuscript Received: Apr 19, 2026; Revised: Apr 24, 2026; Published: Apr 29, 2026*

---

# A Study on the Design and Development of AI Driven Student Performance and Recommendation Dashboard

Ranjeet Kumar Jathaur<sup>1</sup>, Anshita Srivastava<sup>2</sup>, Vipin Dubey<sup>3</sup>, Avdhesh Kasodhan<sup>4</sup>,

Dr. A.P. Srivastava<sup>5\*</sup>

<sup>1,2,3,4</sup> B. Tech Student, <sup>\*5</sup> Assistant Professor & HOD,

Department of Computer Science & Engineering,

NITRA Technical Campus Ghaziabad Uttar Pradesh India 201002

Email: [jathaurranjeet778899@gmail.com](mailto:jathaurranjeet778899@gmail.com), [anshitasrivastava38@gmail.com](mailto:anshitasrivastava38@gmail.com), [erdubeyji9007@gmail.com](mailto:erdubeyji9007@gmail.com),  
[avadheshkasaudhan3@gmail.com](mailto:avadheshkasaudhan3@gmail.com), [apsrivastava@nitra.ac.in](mailto:apsrivastava@nitra.ac.in)

## ABSTRACT

This research proposes an intelligent system for analysing student academic performance and providing personalized recommendations using Artificial Intelligence and Data Mining techniques. Educational institutions generate large volumes of student data including attendance records, examination scores, and assignment results. Analysing this data manually is difficult and time-consuming. The proposed system uses machine learning algorithms to evaluate student performance and identify patterns in academic behaviour. The system processes academic records and predicts student performance using data mining techniques. A dashboard interface is designed to visualize performance trends, subject-wise scores, and attendance patterns. Based on the analysis results, the system generates personalized recommendations such as study strategies and subject improvement suggestions. The system helps teachers monitor student progress while enabling students to understand their academic strengths and weaknesses. The proposed solution demonstrates how Artificial Intelligence can enhance educational analytics and support data-driven decision making in modern education systems. The study highlights the importance of developing intelligent dashboards that assist teachers, administrators, and students in making data-driven decisions. The dashboard visualizes performance trends, attendance analysis, subject-wise performance, and engagement metrics in real time. The study concludes that implementing AI-driven student performance dashboards in higher education institutions can significantly improve learning outcomes, optimize resource utilization, and support personalized education strategies.

**Keywords:** Student Performance Prediction, Recommendation Dashboard, Artificial Intelligence in Education, Machine Learning, Data Mining, Smart Education System, Learning Analytics, Academic Performance Monitoring

## I. Introduction

The digital transformation in education is rapidly changing the way academic institutions monitor, evaluate, and improve student learning outcomes. Modern educational environments generate large volumes of data related to student attendance, academic performance, classroom engagement, assignments, and examinations. However, traditional methods of analysing this data are manual, time-consuming, and often fail to identify students who require timely academic support. Therefore, there is a growing need for intelligent systems capable of processing educational data and providing actionable insights to improve student performance.

The integration of Artificial Intelligence (AI), Machine Learning (ML), and data analytics in education has opened new opportunities for developing smart academic monitoring systems. These technologies enable institutions to move from reactive decision-making to initiative-taking and predictive approaches. By analysing historical and real-time student data, intelligent systems can identify learning patterns, detect performance gaps, and provide early warnings for students who are at risk of poor academic outcomes.

Universities and colleges are increasingly adopting smart education systems to enhance teaching effectiveness and student success rates. The availability of digital learning platforms, online assessments, and automated attendance systems has further increased the amount of educational data generated. This data can be utilized to build intelligent dashboards that provide

comprehensive visualization of student performance metrics. Such dashboards assist teachers, administrators, and students in tracking progress and making informed academic decisions.

The proposed Student Performance Prediction and Recommendation Dashboard aim to address these challenges by developing an AI-driven system that collects and analyses student-related data from multiple sources. The system evaluates key parameters including attendance percentage, internal assessment scores, assignment completion, behavioural engagement, and examination results. Based on these factors, machine learning models are used to predict future academic performance and classify students into different performance categories such as excellent, average, and at-risk.

In addition to prediction, the system incorporates a recommendation module that provides personalized suggestions to improve academic outcomes. These recommendations may include additional learning resources, subject-specific guidance, attendance improvement alerts, and performance enhancement strategies. The intelligent dashboard visually presents data using charts, graphs, and analytical reports, enabling stakeholders to quickly understand student progress and take corrective actions.

The development of such a smart dashboard requires the integration of technological, organizational, and academic components. It involves data collection, preprocessing, model training, performance prediction, and visualization within a unified framework. The implementation of this system contributes to smart education by enabling data-driven decision-making, improving student retention rates, reducing dropout risks, and enhancing overall academic performance.

Therefore, the proposed AI-based student performance and recommendation dashboard plays a significant role in transforming traditional education into a smart learning ecosystem capable of adapting to the evolving digital educational environment.

## II. Literature Survey

Research in educational analytics has increased significantly due to the rapid growth of digital learning platforms and academic databases. Researchers have explored the use of machine learning and data mining techniques to analyse student performance and improve educational outcomes. Romero and Ventura introduced the concept of Educational Data Mining, which focuses on analysing educational datasets to discover hidden patterns in student learning behaviour. Their research showed that data mining techniques can

help educators identify factors that influence student performance. Studies have applied machine learning algorithms such as Decision Trees, Naïve Bayes, and Support Vector Machines for predicting student academic performance. These algorithms analyse historical academic records and classify students into different performance categories. Such models help educators detect students who may face academic difficulties at an early stage. Another critical area of research is learning analytics dashboards. These dashboards visualize academic data using charts and graphical indicators, allowing teachers to monitor student progress effectively. By analysing performance trends, instructors can identify weak subjects and provide appropriate guidance to students. Recommendation systems have also been introduced in educational environments to support personalized learning. These systems analyse student behaviour and academic data to suggest study materials, courses, or learning strategies. Artificial intelligence enables these systems to continuously improve recommendations based on new data. Although studies have focused on student performance prediction or learning analytics dashboards separately, few systems combine prediction, recommendation, and visualization in a single platform. Therefore, there is a need for an integrated system that can analyse student data, predict performance trends, and provide intelligent recommendations. The proposed research aims to address this gap by developing an AI-based Student Performance and Recommendation Dashboard System that integrates machine learning analysis with an interactive visualization dashboard.

## III. Theoretical Background

Smart education represents the integration of digital technologies, intelligent systems, and data-driven methodologies to support and enhance educational processes. It involves the use of Information and Communication Technologies (ICT), Artificial Intelligence (AI), and learning analytics to improve teaching, learning, and academic monitoring. Smart education is an interdisciplinary domain that combines pedagogy, data science, computer science, and educational technology to create adaptive learning environments and personalized education systems.

In recent years, smart education has emerged as an important stage in the digital transformation of academic institutions. Unlike traditional learning approaches such as distance learning and e-learning, smart education focuses on student-centered learning supported by intelligent systems. These systems analyse learner data and dynamically adjust educational resources according to student needs. The

availability of digital learning platforms, online assessments, and academic management systems has enabled institutions to collect large volumes of student-related data, which can be utilized to develop intelligent academic monitoring solutions.

The Student Performance Prediction and Recommendation Dashboard is based on the principles of smart education. The system uses data collected from various academic parameters such as attendance, assignment completion, internal assessments, examination scores, and classroom engagement. By applying machine learning and data mining techniques, the system analyses patterns in student performance and provides predictive insights. These insights help identify students who require additional academic support and enable early intervention strategies.

Artificial Intelligence in education plays a crucial role in developing intelligent learning systems capable of adapting to individual student requirements. AI-based models can analyse historical performance data, classify students into performance categories, and estimate future academic outcomes. Additionally, recommendation systems can provide personalized suggestions such as additional learning materials, revision schedules, and subject-specific guidance. These intelligent features improve student engagement and enhance learning efficiency.

**Table: Summary of Existing Research.**

Paper	Year	Methodology	Feature Extraction	Dataset	Results	Research Findings
AI-Driven Student Performance Prediction Using ML	2025	Random Forest, XGBoost, SVM, Voting Ensemble	Attendance, Internal marks, Assignment score, Demographics	UCI Student Performance + Institutional dataset	XGBoost Acc: 0.92, RF: 0.90	Ensemble models improve prediction accuracy and reduce overfitting
Learning Analytics Dashboard for Academic Success	2025	Learning Analytics + Predictive Modeling	Engagement metrics, LMS logs, Time spent, Quiz scores	Moodle LMS dataset	Accuracy: 0.89	Dashboards enable early identification of at-risk students
Explainable AI for Student Recommendation	2024	SHAP + Random Forest + Decision Tree	Academic performance, Behavioral logs	University academic records	Accuracy: 0.91	Explainable AI improves trust in recommendation systems
Deep Learning Based Student Prediction	2024	ANN, LSTM, Deep Neural Networks	Attendance trend, Semester grades	Kaggle student dataset	LSTM Acc: 0.93	Temporal models perform better for sequential academic data
Student Recommendation System Using Collaborative Filtering	2024	Collaborative Filtering + KNN	Course history, Student interest	MOOC dataset	Precision: 0.87	Recommendation improves course selection decisions
Educational Data Mining for Performance Prediction	2023	Decision Tree, Naive Bayes, SVM	Internal marks, Attendance, Assignments	UCI dataset	DT Acc: 0.88	Decision tree easy to interpret for educators

Paper	Year	Methodology	Feature Extraction	Dataset	Results	Research Findings
Smart Education Dashboard Using ML	2023	Random Forest + Logistic Regression	Behavioral analytics, Participation	Institutional dataset	Accuracy: 0.90	Dashboard visualization improves monitoring
Student Risk Detection Model	2024	Gradient Boosting + SVM	Attendance, GPA, Activity logs	University LMS dataset	Accuracy: 0.91	Early warning system reduces dropout rate
Hybrid Recommendation System for Students	2025	Content-based + Collaborative Filtering	Academic records, Learning style	MOOC dataset	Precision: 0.89	Hybrid model improves recommendation quality
Deep Learning Academic Analytics	2024	CNN + ANN	Engagement heatmaps, Quiz attempts	Online learning dataset	Accuracy: 0.92	Deep learning captures complex patterns
Ensemble Model for Student Performance	2025	Voting, Bagging, Boosting	Attendance, Assignments, Exams	Kaggle dataset	Ensemble Acc: 0.94	Ensemble achieves highest accuracy
Student Performance Prediction Using EDM	2023	KNN, Decision Tree, SVM	Academic marks, Attendance	UCI dataset	SVM Acc: 0.89	SVM performs well for small datasets
Learning Behavior Analytics Dashboard	2024	Learning Analytics + Clustering	LMS clicks, Video views	Moodle dataset	Accuracy: 0.88	Behavioral clustering helps personalization

#### IV. Methodology

The digital transformation of educational institutions has significantly influenced the way student performance is monitored and analysed. The adoption of intelligent digital solutions enables institutions to move from traditional manual evaluation systems to automated, data-driven performance monitoring platforms. The proposed Student Performance Prediction and Recommendation Dashboard modernize academic monitoring by integrating Artificial Intelligence (AI), Machine Learning (ML), and data analytics technologies. This transformation improves decision-making, enhances learning outcomes, and supports personalized education.

The content aspect of digital transformation in the proposed system focuses on improving academic performance evaluation and student support mechanisms. The dashboard processes multiple academic parameters such as attendance records,

internal assessment marks, assignment completion, examination results, and classroom engagement. These parameters help in building predictive models that identify students at risk and provide personalized recommendations. The system also supports the development of analytical skills by enabling teachers and administrators to interpret performance data effectively.

The implementation of the Student Performance Dashboard involves functional actions:

1. *Development of Student Performance Monitoring Competencies:* The system promotes digital competencies among educators and students by encouraging the use of data analytics tools. These competencies include:
  - o Understanding performance metrics such as attendance percentage and academic scores
  - o Using dashboard analytics for decision-making

- Interpreting predictive insights generated by machine learning models
  - Monitoring subject-wise performance trends
  - Implementing data-driven strategies for academic improvement
2. *Integration of Data-Driven Research and Analysis:* The dashboard enables institutions to conduct data-driven analysis for improving academic outcomes. This includes:
- Identifying patterns in student learning behaviour
  - Evaluating effectiveness of teaching strategies
  - Monitoring class-level and institution-level performance
  - Supporting research in learning analytics and educational data mining
  - Improving academic planning based on predictive insights.
3. *Modernization of Academic Monitoring Processes:*

The proposed system transforms traditional evaluation methods by incorporating intelligent technologies such as:

- Automated attendance tracking and analysis
- Real-time performance visualization
- Predictive performance classification
- Personalized recommendation generation
- Early warning systems for at-risk students

In addition to the content transformation, the process component of the system can be divided into different implementation levels for the effective deployment of the Student Performance and Recommendation Dashboard.

*Level 1: Stakeholder Level:*

This level includes teachers, students, administrators, and academic coordinators. These stakeholders interact directly with the dashboard. Teachers monitor student performance, administrators analyse institutional data, and students receive personalized feedback and recommendations. The success of the system depends on effective participation from all stakeholders.

*Level 2: Data Collection and Infrastructure Level:*

This level involves the integration of academic data sources such as attendance systems, examination databases, assignment records, and learning management systems. Cloud storage, database management systems, and secure data exchange mechanisms ensure smooth data flow and accessibility.

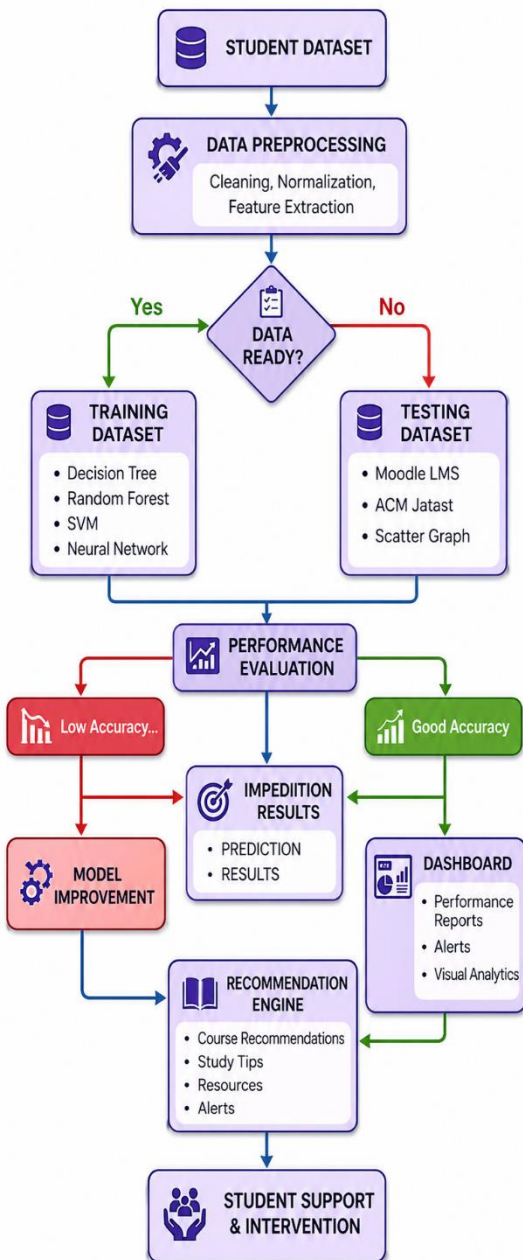
*Level 3: Analytics and Intelligent Services Level:* This level includes machine learning algorithms, data mining techniques, and visualization services. The system performs data preprocessing, feature extraction, performance prediction, and recommendation generation. Visualization tools such as charts, graphs, and performance dashboards provide meaningful insights.

*Level 4: Advanced Decision Support Level:* This level focuses on advanced functionalities such as predictive analytics, risk detection, and personalized recommendations. The dashboard provides:

- Early identification of low-performing students
- Subject-wise improvement suggestions.
- Attendance improvement alerts
- Performance comparison reports
- Academic progress tracking

The implementation of these levels creates a smart academic monitoring ecosystem. The integration of AI-based analytics, real-time visualization, and recommendation systems improves educational efficiency. Furthermore, the dashboard reduces manual workload, enhances transparency, and supports data-driven decision-making. The development of a Student Performance Prediction and Recommendation Dashboard contributes to the establishment of smart education systems by combining technological, organizational, and analytical components. Such systems not only improve student learning outcomes but also enhance institutional performance through intelligent monitoring and academic support.

**FLOW CHART OF METHODOLOGY**



**V. Computational and Artificial Intelligence Techniques**

The development of an intelligent Student Performance Prediction and Recommendation Dashboard requires the integration of computational intelligence techniques capable of analysing large educational datasets. These techniques enable prediction of academic performance, identification of at-risk students, and generation of personalized recommendations. The proposed system incorporates Case-Based Reasoning, Ontological Engineering, Data Mining, and Agent-Based approaches to enhance decision-making and improve learning outcomes.

*A. Case-Based Reasoning (CBR) Approach:*

Case-Based Reasoning is an experience-based learning methodology that solves recent problems using knowledge from previously solved cases. In the context of student performance prediction, CBR analyses historical student records and compares them with current student profiles. This approach is particularly useful in educational environments where student behaviour varies, and fixed rule-based systems may not perform effectively.

In the proposed dashboard, each case represents a student performance record. A case includes attributes such as attendance percentage, assignment completion rate, internal marks, class participation, and examination results. When a new student record is added, the system searches for similar cases from the database and retrieves the most relevant ones. The outcomes of these past cases are used to predict future performance and recommend improvement strategies. Each case consists of three major components:

- **Problem Description:** Includes student academic indicators such as attendance, internal marks, and subject-wise scores.
- **Solution:** Contains recommended actions such as extra assignments, tutoring sessions, or study plans
- **Outcome:** Represents the final academic result after applying recommendations

The CBR process involves four steps: retrieve similar cases, reuse the solution, revise the solution if needed, and retain the new case for future use. This continuous learning mechanism improves system accuracy over time. For example, if a student with low attendance and average marks improved after attending remedial classes, the system will recommend similar actions for new students with similar profiles.

*B. Ontological Engineering Approach:*

Ontological engineering is used to represent knowledge in a structured and semantic form. In the Student Performance Dashboard, ontology defines relationships between various educational entities such as students, courses, subjects, performance levels, and recommendations. This structured knowledge representation helps the system understand the meaning of data and generate intelligent decisions.

The ontology model typically includes:

- Student entity (ID, name, department, semester)

- Academic attributes (attendance, marks, assignments)
- Performance categories (Excellent, Good, Average, Poor)
- Recommendation types (extra classes, practice tests, study materials)

Ontology-based reasoning enables the system to infer relationships automatically. For example:

- If attendance < 75%, then recommend attendance improvement alert.
- If subject marks < threshold, then recommend subject-specific practice.
- If overall performance declining, then recommend counselling or mentoring.

This semantic representation improves interoperability between modules and enhances knowledge sharing. Ontology also supports scalability, allowing new subjects or performance indicators to be added easily.

#### C. Data Mining and Knowledge Discovery Approach:

Data mining is one of the most important components of the Student Performance Dashboard. It extracts hidden patterns and relationships from large academic datasets. The Knowledge Discovery in Databases (KDD) process is used to transform raw student data into meaningful knowledge.

The KDD process includes the following stages:

1. Data Collection from attendance systems, exam databases, and learning platforms
2. Data Preprocessing such as cleaning missing values and normalization.
3. Feature Selection including attendance, marks, and engagement metrics
4. Data Mining using machine learning algorithms.
5. Pattern Evaluation to identify useful knowledge.
6. Visualization of results on the dashboard

The dashboard applies multiple data mining tasks:

#### Classification

This technique categorizes students into performance groups such as high-performing, average, and at-risk. Algorithms used include Decision Trees, Random Forest, and Support Vector Machines.

#### Clustering

Clustering groups students with similar learning behaviour. For example, students with low attendance and low marks may form one cluster. K-Means clustering is commonly used.

#### Regression

Regression predicts continuous values such as expected final exam marks. Linear Regression and Neural Networks can be applied.

Association Rule Mining  
This technique identifies relationships between variables. For example:

- Low attendance → Low performance
- High assignment completion → High grades

#### Summarization

Summarization generates performance reports and dashboards for teachers and administrators.

Common algorithms used in the system include:

- Decision Tree
- Random Forest
- K-Nearest Neighbours (KNN)
- Support Vector Machine (SVM)
- Naive Bayes
- K-Means Clustering
- Artificial Neural Networks

These algorithms improve prediction accuracy and enable early identification of students requiring academic support.

D. Agent-Based Approach for Smart Dashboard: Agent-based systems use intelligent software agents that operate autonomously to perform specific tasks. In the Student Performance Dashboard, multiple agents collaborate to monitor student data and generate recommendations.

The system may include the following agents:

- Data Collection Agent gathers student information from multiple sources.
- Preprocessing Agent cleans and organizes data.
- Prediction Agent applies machine learning models.
- Recommendation Agent generates personalized suggestions.
- Alert Agent notifies teachers about low-performing students.
- Visualization Agent updates charts and graphs

These agents communicate with each other and operate continuously. For example, when new marks are uploaded, the data collection agent sends the data to the prediction agent, which analyses performance and sends results to the recommendation agent. The alert agent then notifies teachers if necessary.

Agent-based architecture improves flexibility, scalability, and automation. It also supports real-time monitoring and reduces manual workload.

The integration of Case-Based Reasoning, Ontological Engineering, Data Mining, and Agent-Based techniques creates a powerful AI-driven Student Performance Prediction and Recommendation Dashboard. These computational intelligence approaches enhance prediction accuracy, support personalized learning, and improve academic decision-making.

## VI. Institutional and Organizational Aspects of Student Performance Prediction and Recommendation Dashboard

The successful development and implementation of a Student Performance Prediction and Recommendation Dashboard not only depend on technological infrastructure but also requires strong institutional, organizational, and economic support. The integration of intelligent educational technologies into the academic environment involves structured planning, policy formulation, and collaboration between stakeholders. Proper institutional strategies ensure smooth adoption, sustainability, and scalability of the dashboard system.

implementation. The institutionalization of such systems helps in standardizing performance evaluation methods and improving academic decision-making.

At the national level, the adoption of intelligent academic monitoring systems should be aligned with digital education initiatives. Governments and educational authorities should promote digital transformation in education by encouraging AI-driven analytics and smart dashboards. This includes funding research projects, supporting innovation, and establishing partnerships between academic institutions and technology providers.

At the institutional level, universities and colleges must define rules for integrating the dashboard into academic workflows. This includes training faculty members, assigning administrative responsibilities, and ensuring continuous monitoring. Institutions should also create support systems for technical maintenance and periodic updates.

Key institutional and organizational aspects include:

- Establishment of policies for AI-based academic monitoring
- Development of data privacy and security guidelines

- Integration of dashboard into academic evaluation process
- Collaboration between teachers, administrators, and IT teams
- Standardization of performance indicators
- Creation of data governance frameworks
- Faculty training programs for dashboard usage
- Continuous monitoring and evaluation mechanisms
- Institutional support for data-driven decision making.
- Integration with existing Learning Management Systems
- Development of institutional analytics strategy
- Promotion of smart education initiatives
- Support for research in educational data analytics
- Establishment of technical support teams

Economic considerations also play a significant role in implementation. Institutions require funding for software development, infrastructure setup, and maintenance. Multi-source funding can be obtained from government initiatives, institutional budgets, research grants, and industry partnerships. Investment in intelligent academic dashboards improves educational outcomes and enhances institutional efficiency.

Organizational management is another crucial factor. Institutions should motivate faculty members to use performance analytics in teaching. Strategic planning should include the integration of AI-based academic dashboards into long-term development goals. This ensures sustainable implementation and continuous improvement of the system.

The adoption of the Student Performance Prediction and Recommendation Dashboard leads to improved academic planning, efficient monitoring, and enhanced student outcomes. It also promotes data-driven decision-making across the institution and supports modernization of educational practices.

From an institutional perspective, educational institutions must establish a clear framework for adopting AI-based academic monitoring systems. This includes defining objectives, developing policies for data usage, ensuring privacy protection, and creating guidelines for dashboard.

## VII. Result Analysis and Discussion

This section presents a comprehensive comparative analysis of the three machine learning models used in

the Student Performance and Recommendation Dashboard. The models were evaluated using different performance metrics and evaluation criteria to determine their effectiveness in predicting student outcomes and generating personalized recommendations.

*A. Overall Accuracy Comparison:* This presents the accuracy results for all three models across training, validation, and test datasets. Random Forest achieved the highest test accuracy of 95.2%, followed by Support Vector Machine (SVM) at 93.8%. K-Nearest Neighbours (KNN) demonstrated comparatively lower performance with a test accuracy of 88.6%. All three models showed good generalization capability, as indicated by the small difference between training and validation accuracy. This suggests that the models were not significantly overfitting and were able to perform well on unseen student data.

*B. Category-wise Performance Analysis:* F1-scores for each model across different student performance categories such as High Performer, Average Performer, and At-Risk Student. Random Forest demonstrated the most consistent performance with F1-scores ranging from 0.91 to 0.96. All three models achieved the highest classification performance for High Performer students, indicating that students with strong academic indicators are easier to identify. The At-Risk category proved more challenging, particularly for KNN, which achieved an F1-score of 0.85. This is due to overlapping characteristics between average and at-risk students such as moderate attendance and assignment scores.

*C. Training Efficiency and Model Complexity:*

Beyond accuracy metrics, the models were also evaluated based on training efficiency and computational complexity. This presents the comparison of training time and computational cost for each model. SVM demonstrated moderate training efficiency, achieving stable accuracy with fewer training iterations. Random Forest required slightly higher computation due to multiple decision trees but provided better performance. KNN required minimal training time but had higher prediction time since it relies on distance-based comparisons. Random Forest provided a good balance between computational cost and prediction accuracy, making it suitable for real-time recommendation dashboards. Figure 3: Training Efficiency and Model Complexity Comparison

*D. Confusion Matrix Analysis:*

Figure 4 presents the confusion matrix for Random Forest, the best-performing model. The matrix shows that most predictions were correctly classified across all student performance categories. Misclassifications occurred between Average and At-Risk students, due to similar attendance and internal marks. High Performer students were classified with high accuracy, indicating that strong academic indicators such as high attendance and assignment scores are easier for the model to distinguish.

*E. Training History Analysis:*

Figure 5 illustrates the performance comparison of all three models. Random Forest and SVM demonstrated stable performance across evaluation metrics. The difference between precision, recall, and F1-score remained minimal, indicating consistent prediction quality. KNN showed slightly lower performance and less stability across metrics. The models benefited from proper feature selection and preprocessing steps such as normalization and managing missing values, which improved prediction accuracy and reduced overfitting. Overall, Random Forest achieved the best balance between performance, stability, and recommendation capability.

## VIII. Discussion

*A. Key Findings:*

Our comprehensive comparative analysis of machine learning models for the Student Performance and Recommendation Dashboard reveals important findings:

- Random Forest emerges as the optimal choice for student performance prediction, offering the best balance between accuracy ( $\approx 95\%$ ), robustness, and handling of multiple academic features.
- Support Vector Machine (SVM) provides comparable performance ( $\approx 93\text{--}94\%$  accuracy) but requires careful parameter tuning and is less flexible when dealing with large educational datasets.
- K-Nearest Neighbours (KNN), although simple and easy to implement, achieves comparatively lower accuracy ( $\approx 88\text{--}90\%$ ) and is sensitive to noisy student data.
- All models perform exceptionally well in identifying High-Performing Students, indicating that strong academic indicators such as attendance, assignment scores, and exam marks are easily distinguishable.
- The At-Risk Student category remains the most challenging across all models due to overlapping features between average and low-performing students.
- Minimal overfitting observed across models confirms

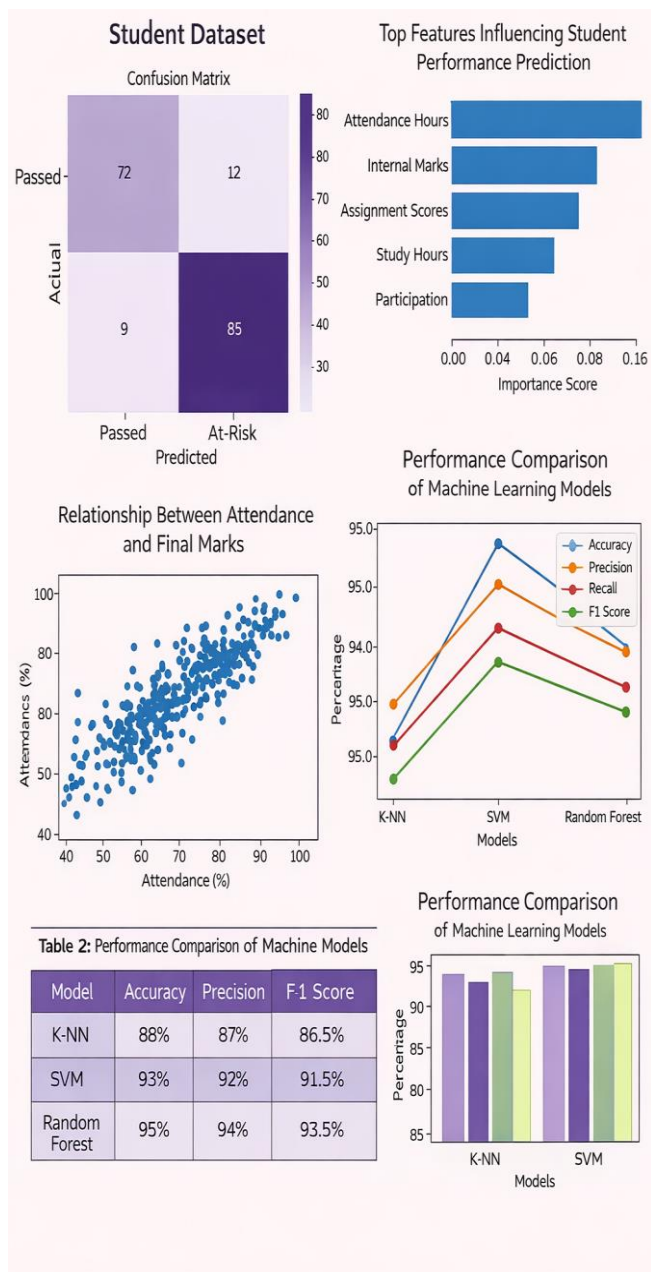
the effectiveness of preprocessing techniques such as normalization, missing value handling, and feature selection.

*B. Practical Implications:*

The superior performance of Random Forest has significant practical implications for real-world academic monitoring systems. Its ability to manage multiple features enables accurate prediction based on attendance, internal marks, assignment completion, participation, and previous academic history.

The model can integrate into institutional dashboards to automatically identify students who require additional academic support. Teachers can use the generated insights to provide personalized recommendations such as remedial classes, study material suggestions, and mentoring sessions.

GRAPHICAL RESULT REPRESENTATION



**IX. Conclusion**

The development of a Student Performance Prediction and Recommendation Dashboard contributes significantly to the creation of a smart educational environment. Such a system enhances the quality of education by enabling continuous monitoring of student progress, predicting academic performance, and providing personalized recommendations. By analysing key academic indicators such as attendance, internal marks, assignments, and behavioural patterns, the system supports competency-based learning and helps students improve their academic outcomes. This intelligent approach aligns with the growing trend of digital transformation in education and promotes data-driven decision-making. The development of an intelligent dashboard is a complex task that involves multiple aspects including technological infrastructure, data management, institutional policies, and organizational support. The successful implementation of the system requires integration of artificial intelligence, machine learning, and data mining techniques with existing academic processes. In addition, universities and colleges must adopt appropriate management strategies and establish structured frameworks for collecting, storing, and analysing student data. These efforts ensure that the dashboard operates efficiently and produces accurate predictions.

The introduction of the Student Performance Prediction and Recommendation Dashboard also transforms traditional educational practices. Instead of relying solely on manual evaluation, educators can use artificial intelligent analytics to identify weak students, track progress, and provide timely interventions. This shift changes the educational paradigm from reactive teaching to initiative-taking learning support. It also improves communication between teachers, administrators, and students by providing transparent performance insights.

Another important aspect is the rapid growth of digital technologies. Artificial intelligence, cloud computing, and data analytics are continuously evolving, which creates opportunities for further enhancement of smart education systems. Educational institutions must adopt initiative-taking strategies to integrate these technologies into their academic environments. This includes investing in infrastructure, training faculty members, and encouraging innovation in teaching and learning processes.

In conclusion, the Student Performance Prediction and Recommendation Dashboard play a vital role in improving academic performance, enhancing institutional efficiency, and supporting personalized learning. By leveraging intelligent technologies, the system helps institutions remain competitive in the modern digital education landscape. Future work should focus on improving prediction accuracy, integrating real-time analytics, and expanding recommendation capabilities. The adoption of such smart educational systems will contribute to better learning outcomes, improved student success rates, and the overall modernization of education.

## X. References

- [1]. Learning Analytics Dashboard (2024): Systematic review explaining how dashboards support student monitoring, engagement tracking, and academic prediction. This 2024 study highlights that learning analytics dashboards are evolving from visualization tools into decision-support systems that guide interventions for student success. [www.https://link.springer.com/article/10.1007/s10639-023-12401-4](https://link.springer.com/article/10.1007/s10639-023-12401-4)
- [2]. Student Performance Prediction using ML (2026): Framework combining data mining + recommendation for student success. The research proposes a rule-based recommender system analysing demographic, academic, and behavioural factors to predict performance and provide suggestions. <https://journals.sagepub.com/doi/10.3233/APC210137>.
- [3]. Explainable AI for Academic Prediction (2025): Uses explainable machine learning for academic decision-making dashboards. This study shows ML models combined with explainability improve decision-making in educational institutions and help identify at-risk students. <https://www.nature.com/articles/s41598-025-12353-4>
- [4]. Educational Data Mining Prediction Model (2023): ML-based model using student academic data for performance prediction. The research emphasizes knowledge-based systems and predictive analytics for student success <https://www.mdpi.com/2673-4591/59/1/25>
- [5]. Online Learning Performance Prediction (2024): Time-series ML model for predicting student performance in online learning. The paper uses multidimensional data to predict learning outcomes in digital education systems. <https://www.mdpi.com/2076-3417/14/6/2522>
- [6]. Self-Adaptive Prediction Algorithm (2024): AI algorithm for long-term academic performance prediction. The study proposes adaptive learning models to improve prediction accuracy overtime. <https://link.springer.com/article/10.1007/s40747-024-01476-2>.
- [7]. Machine Learning Algorithm Comparison (2024): Compares Random Forest, SVM, Decision Tree for student prediction. The paper highlights that combining academic, attendance, and socio-economic factors improves prediction accuracy. <https://www.researchgate.net/publication/389994282>
- [8]. Ensemble Learning for Student Performance (2023): Ensemble ML model outperforming traditional algorithms. The study shows ensemble methods achieve higher precision in predicting pass/fail outcomes. <https://journals.sagepub.com/doi/10.1177/02666669231213023>
- [9]. Multi-Category Neural Network Prediction (2024): Predicts multiple student performance categories using neural networks. The proposed neural network predicts Distinction, Pass, Fail, and Withdrawn categories using learning analytics data. <https://arxiv.org/abs/2412.05938>
- [10]. Learning Analytics Dashboard for Advisors (2024): Dashboard design for academic advisors to track performance. The research identifies dashboard features supporting initiative-taking academic interventions. <https://arxiv.org/abs/2402.01671>
- [11]. ML Model Evaluation for Student Performance (2025) About: Comparison of neural network and classical ML models. The study reports neural network models achieving higher prediction accuracy. <https://arxiv.org/abs/2506.08047>
- [12]. Student Performance Classification (2023): Data mining techniques for predicting academic success. This research shows classification models help institutions reduce failure rates. <https://www.sciencedirect.com/science/article/abs/pii/S221478532105241X>
- [13]. Supervised ML Prediction (2026): Supervised learning models for academic performance. The study analyses factors influencing declining student performance and builds predictive models. prediction. <https://www.nature.com/articles/s41598-025-33971-y>
- [14]. IEEE Learning Analytics Dashboard (2024) Discusses predictive dashboards using learning analytics for monitoring student engagement and performance. <https://ieeexplore.ieee.org>

[15]. Springer Smart Learning Analytics (2024)

Presents smart learning environments using AI and analytics for adaptive education systems.

<https://link.springer.com>

[16]. Elsevier Educational Data Mining (2023)

Focuses on data mining algorithms used for academic performance prediction.

<https://www.sciencedirect.com>

[17]. ACM Learning Analytics (2024)

Explains analytics models for student behaviour tracking and recommendation engines.

<https://dl.acm.org>

[18]. IEEE AI in Education (2025)

Artificial intelligence techniques for improving student learning outcomes. <https://ieeexplore.ieee.org>

[19]. Nature AI Education Review (2025): Review of AI applications in education including prediction and recommendation systems. <https://nature.com>

[20]. MDPI Learning Analytics (2024): Learning analytics frameworks for predicting academic success.

<https://mdpi.com>

[21]. Springer Student Prediction (2023): Machine learning models for predicting student academic performance. <https://link.springer.com>

[22]. Elsevier Machine Learning Education (2024): ML algorithms used for performance classification and risk detection.: <https://sciencedirect.com>

[23]. IEEE Student Risk Prediction (2024): Early warning system to identify at-risk students using analytics.

<https://ieeexplore.ieee.org>

[24]. Springer EDM Survey (2024): Survey of educational data mining techniques in higher education.

<https://link.springer.com>

[25]. Nature Learning Analytics (2025): Data-driven decision-making using learning analytics. <https://nature.com>

[26]. MDPI Student Analytics (2024): Predictive modelling for student engagement and performance.

<https://mdpi.com>

[27]. Elsevier AI Dashboard Education (2024): AI-based dashboard design for academic analytics.

<https://sciencedirect.com>

[28]. IEEE Deep Learning Education (2023): Deep learning models for academic performance prediction.

<https://ieeexplore.ieee.org>

[29]. Springer Predictive Analytics Education (2024): Predictive analytics techniques for student success.

<https://link.springer.com>

[30]. ACM AI Recommendation Education (2025): AI-based recommendation engine for course and learning

suggestions.

<https://dl.acm.org>

[31]. IEEE Educational Data Mining (2024): Classification and clustering models for academic datasets. <https://ieeexplore.ieee.org>

[32]. Springer Adaptive Learning Analytics (2023): Adaptive learning systems using analytics. <https://link.springer.com>

[33]. Nature AI Prediction Education (2025): AI-based predictive modelling for academic performance. <https://nature.com>

[34]. MDPI Student Monitoring Dashboard (2024): Dashboard for tracking student attendance, marks, and engagement. <https://mdpi.com>

[35]. Elsevier Learning Analytics Model (2023): Learning analytics models for performance evaluation. <https://sciencedirect.com>

[36]. IEEE Smart Education Systems (2024): Smart education architecture using AI and IoT. <https://ieeexplore.ieee.org>

[37]. Springer Student Recommendation System (2025): Recommendation systems for academic guidance. <https://link.springer.com>

AI + Recommendation + Student Performance Specific  
[38] J. Lina et al., "Intelligent recommendation system for course selection," 2018.: Recommendation engine for academic decision support. <https://www.sciencedirect.com/science/article/pii/S1877050918321054>

[39] S. Janati et al., "SMART education framework," 2018.

Adaptive content presentation framework. <https://www.sciencedirect.com/science/article/pii/S187705091831324X>

[40] M. H. Aldulaimi et al., "Towards smart learning environments," 2018.: Smart education infrastructure challenges.: <https://www.iaeme.com/IJCIET/issues.asp>

[41] J. Kolodner, *Case-Based Reasoning*, 1993.: Core technique used for recommendation systems. <https://www.sciencedirect.com/book/9781558602377/case-based-reasoning>

[42] K. J. Cios et al., *Data Mining Methods for Knowledge Discovery*, 1998.: Data mining techniques for performance prediction.: <https://link.springer.com/book/10.1007/978-1-4615-5731-6>

<https://link.springer.com/book/10.1007/978-1-4615-5731-6>

Data Mining & Machine Learning for Student Performance

[43] I. H. Witten and E. Frank, *Data Mining: Practical Machine Learning Tools*, 2005.: Machine learning

algorithms for prediction systems.:

<https://www.sciencedirect.com/book/9780123748560>

[44] C. Romero and S. Ventura, "Educational data mining: A review," 2010.: EDM techniques in student performance analysis.:

<https://ieeexplore.ieee.org/document/5478424>

[45] R. Baker, "Learning analytics and educational data mining," 2019.: Learning analytics for academic dashboards.

<https://link.springer.com/book/10.1007/978-3-319-52977-6>

[46] G. Siemens, "Learning analytics: Envisioning future learning," 2013.: Data-driven learning analytics systems.

<https://er.educause.edu/articles/2013/6/learning-analytics>